

Brenton Nash, MD
Internal Medicine

**Yodit
Negusse, MD**
Unit 35/Kaiser

Cristie Nickel
Marketing

Bridget Okoye, RN
Unit 36

**Temitope Oseromi,
BSN, RN**
ICU

**Kayla Pringle,
BSN, RN**
Women's
Outpatient and
Surgical Center

**Sandra Rector,
M-Div., BCC**
Spiritual Support
Services

**Wendy
Riggin-Killian, RRT**
Respiratory
Therapy

Kathleen Roberts
Integrative and
Palliative Medicine

Jackie Rode, CMA
GBMC Health
Partners Primary
Care - Family Care
Associates

**Sharon Rossi,
MS, RN, CSSM**
Perioperative and
Endoscopy Services

Amy Schulz
Labor and Delivery

Paul Scott, RN
Unit 35

**Meghan
Shackelford,
MSN, CRNP-AC**
Advanced
Practitioners

**Roxanne Sharkey,
BSN, RN, CPEN**
Pediatrics
and Pediatrics
Emergency
Department

Lisa Shehan, RN
Gilchrist
Home Care

**Susan Shultis,
BSN, RN**
Integrative
Care Unit

Wayne Silver, RN
Unit 35

Jennifer Sniadach
GBMC Health
Partners Primary
Care - Family Care
Associates

**Eman (Mona)
Soliman, RN**
Gilchrist
Access Center

Kelly Truax
SAFE and
Domestic
Violence Program

Peggy Walton
Gilchrist
Bereavement
Volunteer

Amanda Ward, MD
Internal Medicine

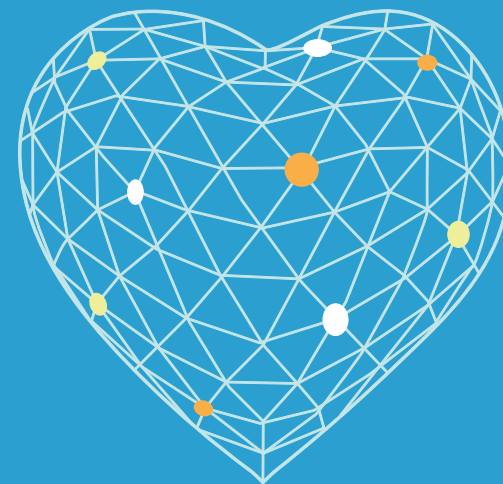
**Kim Wiltshire,
BSN, RN**
NICU

**Krystal
Wouldridge, CMA**
Head & Neck
Surgery

Juanting Xu, RN
Unit 54

Where your

Passion



meets

Compassion

2021

Nancy J. Petrarca

**Compassionate
Caregiver Award**

of the Dr. John Adams Rounds

***Congratulations to our
2021 Nancy J. Petrarca
Compassionate Caregiver Award
Nominees***

Syed Abbas, MD
Gilchrist
RCC Buckeye

**Sylvia Alghali,
BSN, RN**
Unit 35

**Jeffrey
Alvarez, GNA**
Unit 54

**Timothy
Ames, PTA**
Acute Care
Physical Therapy

**Symiah
Ashurst, CMA**
Head & Neck
Surgery

Penny Baker, PA
Vacular Access
Team

Domineik Bell
Medical Oncology

**Stephen Benko
BSN, RN**
Unit 38

**Svetlana
Berkovich,
OTR/L, MS, CLT**
Center for
Rehabilitative
Medicine

**Roz Berkowitz,
BSN, RN**
SAFE and Domestic
Violence Program

Gary Blackwell
Environmental
Services

**Latricia
Blackwell-Smith**
Phlebotomy

**Sheila (Marie)
Bridges, BSN, RN**
NICU

**Donna
Campbell, RN**
PACU

**Liselle
Cordice-Santana**
Radiation Oncology

**Melissa Cross,
RNFNE-AP**
SAFE and Domestic
Violence Program

**Renee
Dennis, CRNP**
Unit 38

**Jacqueline
Dixon, RN**
Unit 38

**Timothy
Doran, MD**
Pediatrics

**Jessica Eisner,
RN, CHPN**
Gilchrist Home
Care Willow
Team

Sara Eleoff, MD
Pediatric
Emergency
Department

**Ann Emmanuel,
BSN, RN**
Unit 54

**Ann Fabula,
BSN, RN**
GOR

**Kristina Farrer,
BSN, RN**
Unit 48

**Lauren
Federline, RN**
SICU

Steffie Feldman
Gilchrist
Bereavement
Volunteer

**Kristin Feliu,
BSN, RN**
SICU

Kevin Ferentz, MD
GBMC Health
Partners Family
Care - Owings Mills

**Lolly
Forsythe-Chisolm**
Integrative and
Palliative Medicine

**Anita
Freeman, CNA**
Unit 48

**Anne Marie
Gardner, RN**
Gilchrist
RCC Pine

**Heather
Gelatka, RN**
Gilchrist Kids

**Christine
Griffin, RN**
Unit 58

William Hand, MD
Family Medicine

Amber Hart, CMA
GBMC Health
Partners Primary
Care - Family Care
Associates

**Anna
Heffernan, CCLS**
Child Life

Jerome Hensby
Retired Volunteer

**Melissa
Hinton, RN**
Emergency Room

Amanda Icenroad
Quality &
Patient Safety

**Deborah Johnston,
MSW, LCSW-C**
Post Partum and
Newborn Nursery

Lisa Jones, CMA
GBMC Health
Partners Primary
Care - Perry Hall

Kristen Jubb, PA
GBMC Health
Partners Primary
Care - Jarrettsville

Joo Kim, MA, PSA
Complex
Care Practice

**Amy LaMoure,
LCSW-C**
Gilchrist
Social Worker

**Caroline Langan,
BSN, RN**
Unit 35

Loretta Langley
GOR Registration/
Family Waiting
Room Front Desk

Zhuoyan Li, MD
Medical Oncology

Amy Marks, MD
Anesthesia

**Kathleen
Mathey, MD**
GBMC Health
Partners Primary
Care - Family Care
Associates

**Anastasia
Mathioudakis, GNA**
Unit 54

Derica Mayfield
GBMC Health
Partners Primary
Care - Family Care
Associates

Cheryl Miles
Environmental
Services